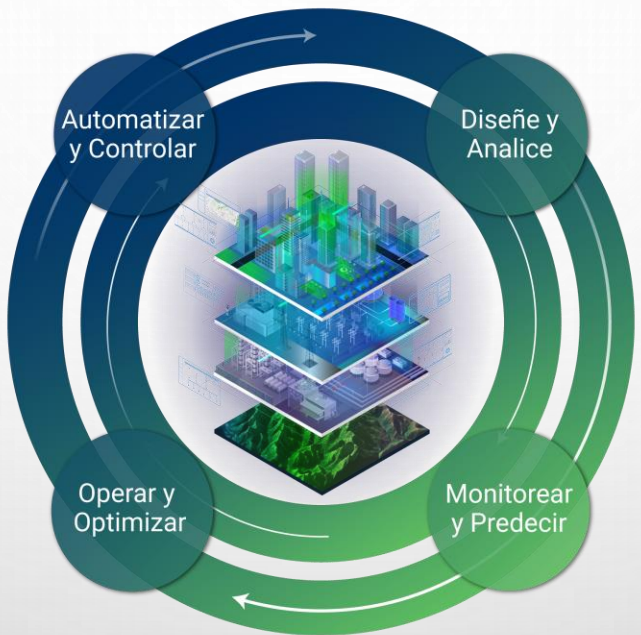


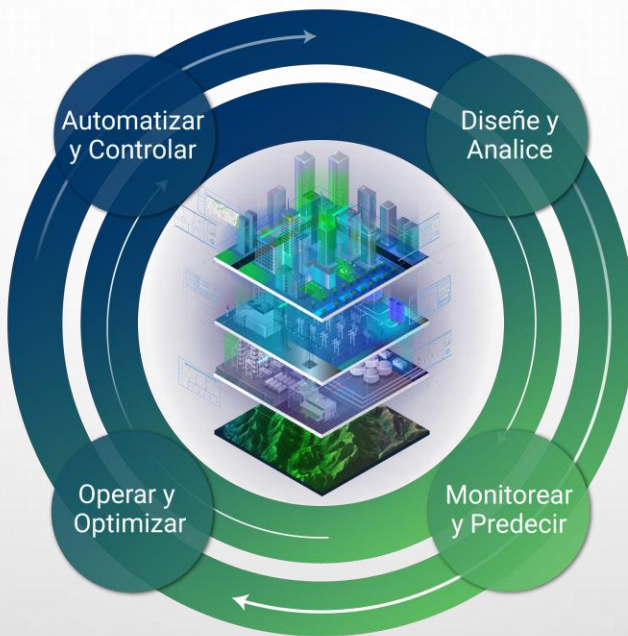
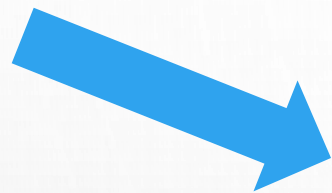
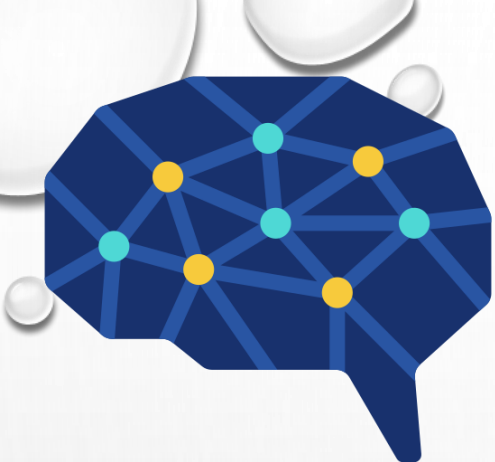
# DigitalTwin for precision livestock farming

LLEIDA<sup>TECH</sup>

ARTIFICIAL INTELLIGENCE & OPTIMIZATION WORKSHOP



**Digital Twin**



Digital Twin

The background is a light gray gradient. It is decorated with several realistic water droplets of various sizes, some with highlights and shadows, giving them a 3D appearance. In the upper center, there is a faint, circular logo or watermark that is not clearly legible but appears to contain some text and a central emblem.

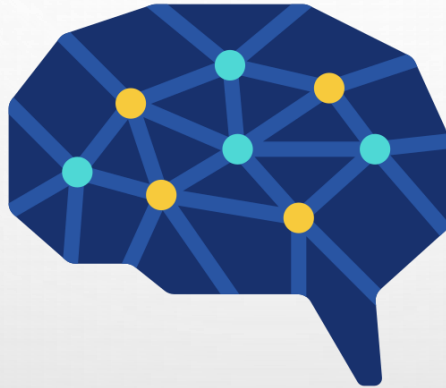
# **ESTIMACIÓN DE PESO CON IA**

# RESUMIENDO MUCHO...

---



Elaborar un dataset  
de entrenamiento



Seleccionar y entrenar  
una red neuronal

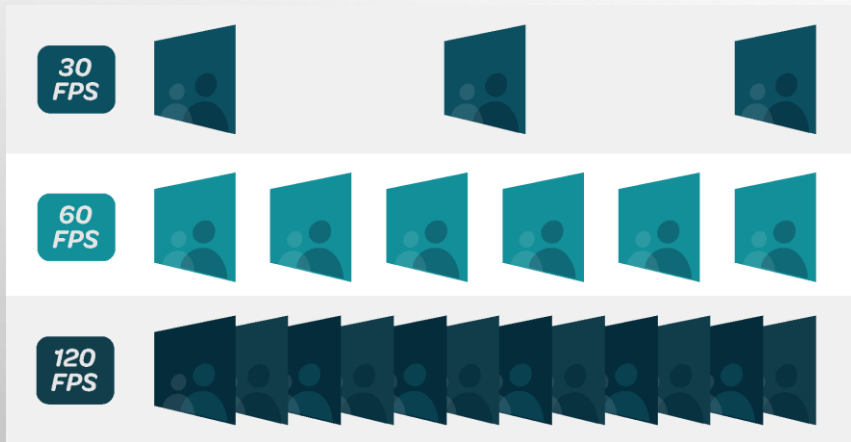


Validar la red

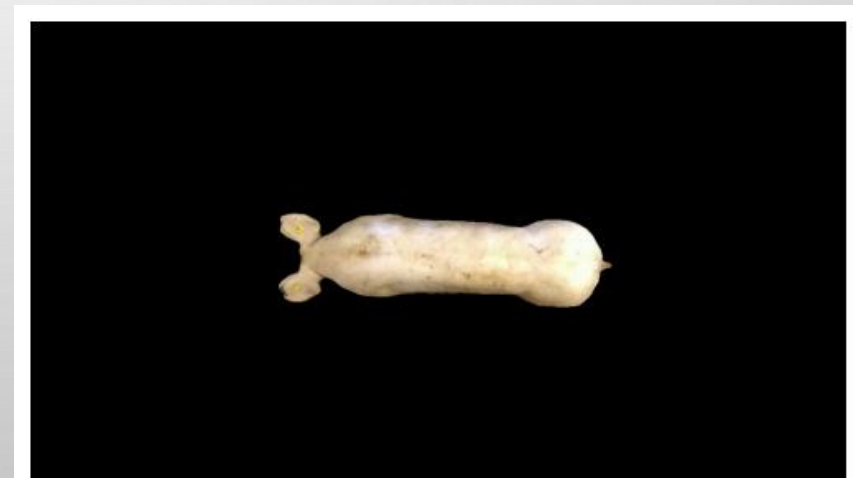
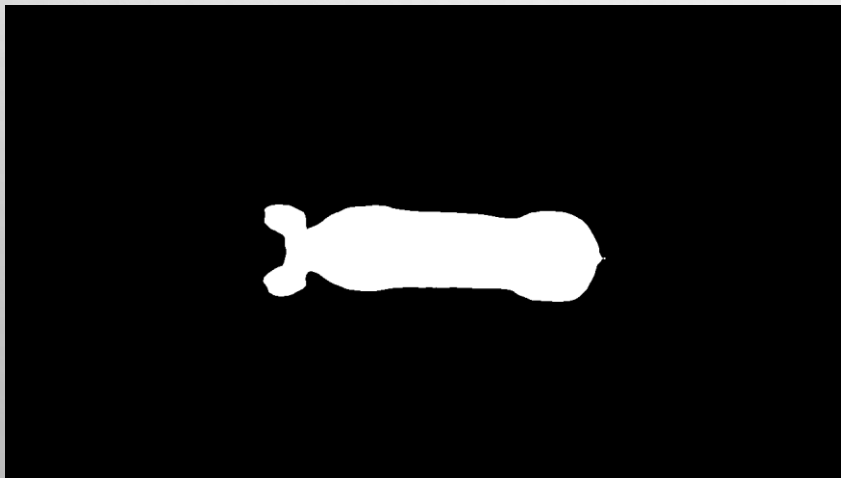


# PRIMERO NECESITAMOS IMÁGENES

---

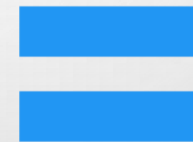
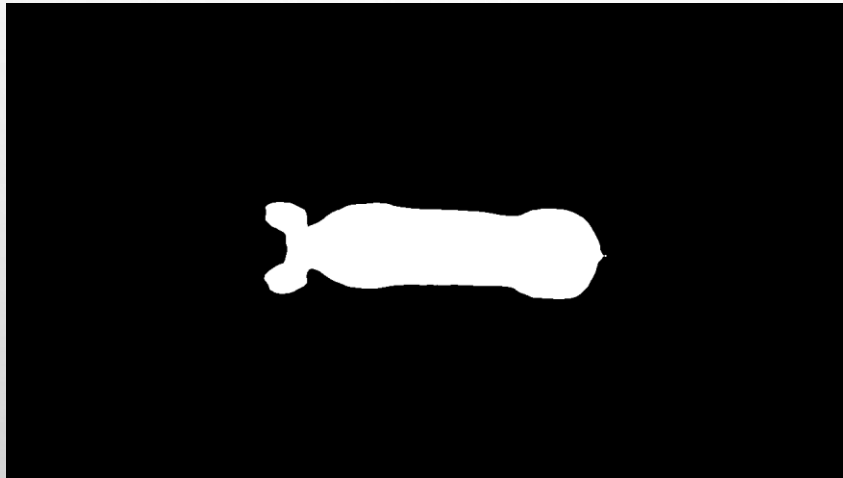


# DESPUÉS, REDUCIR EL PESO



# AHORA, TENEMOS QUE ANOTAR

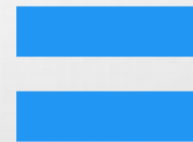
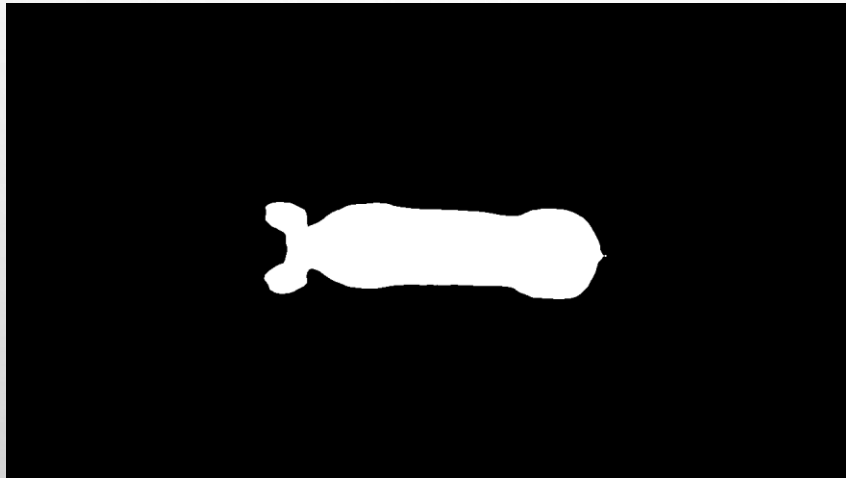
---



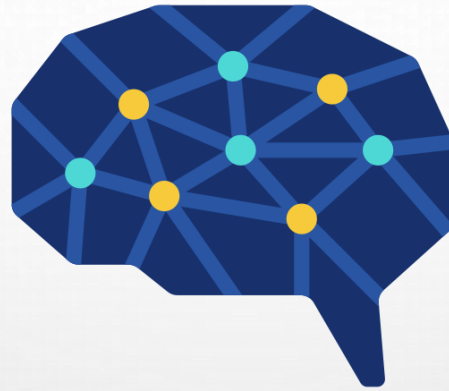


# AHORA, TENEMOS QUE ANOTAR

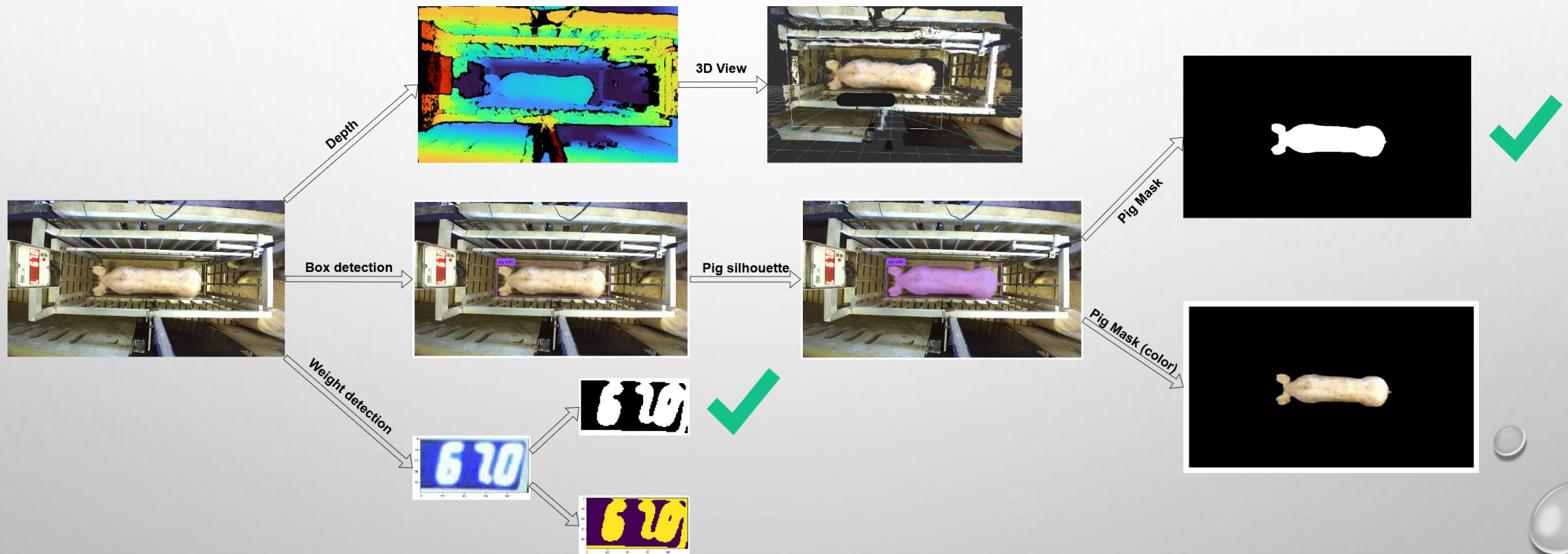
---

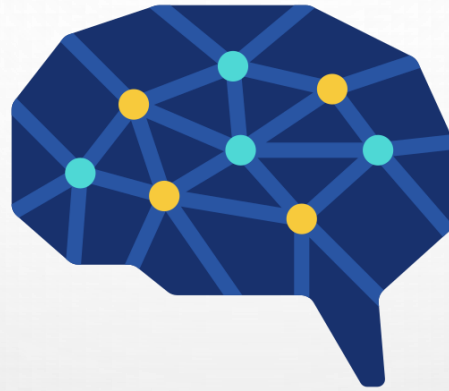


Pero... manualmente?



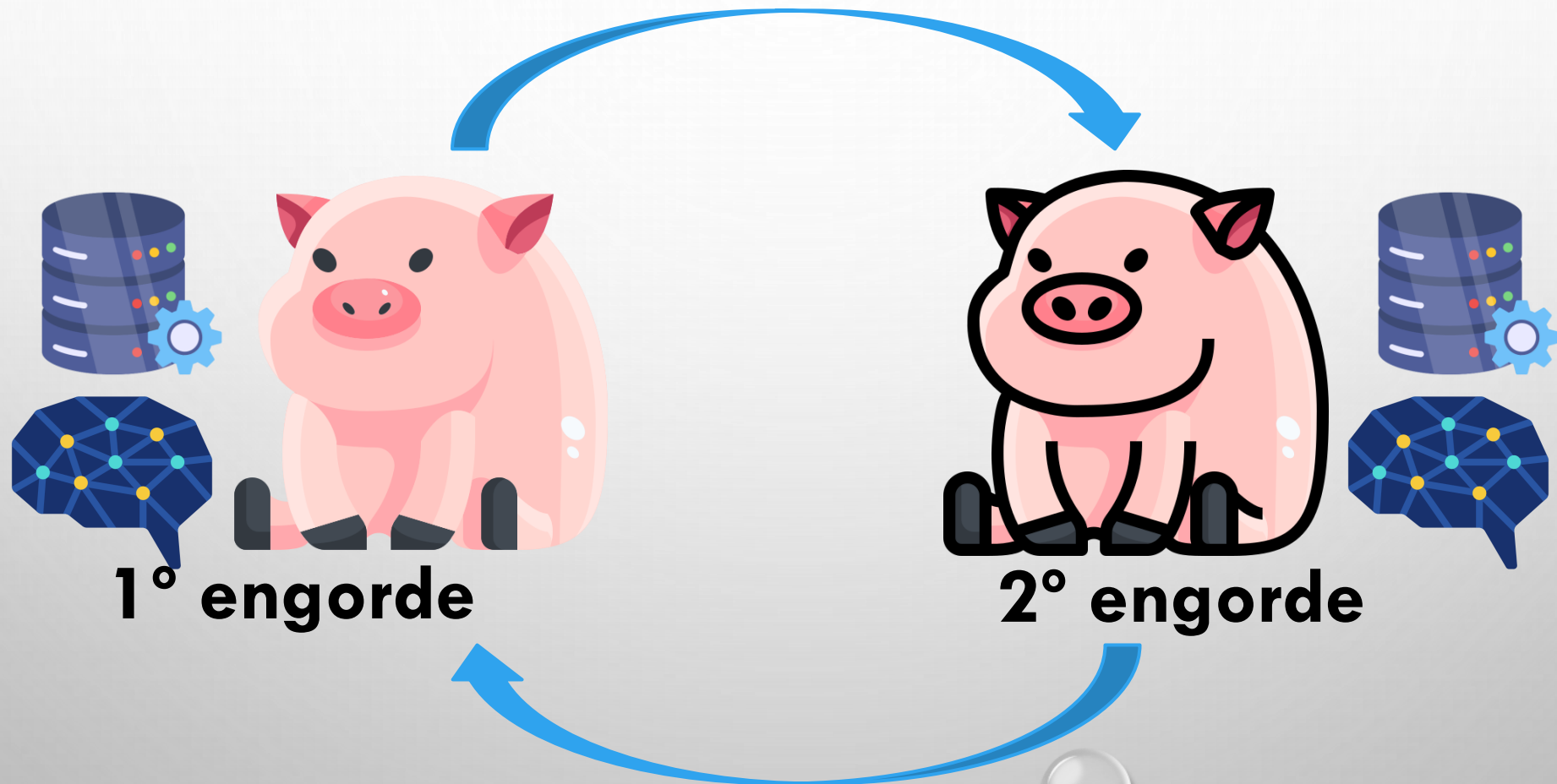
# SELECCIONAMOS UN MODELO Y ENTRENAMOS





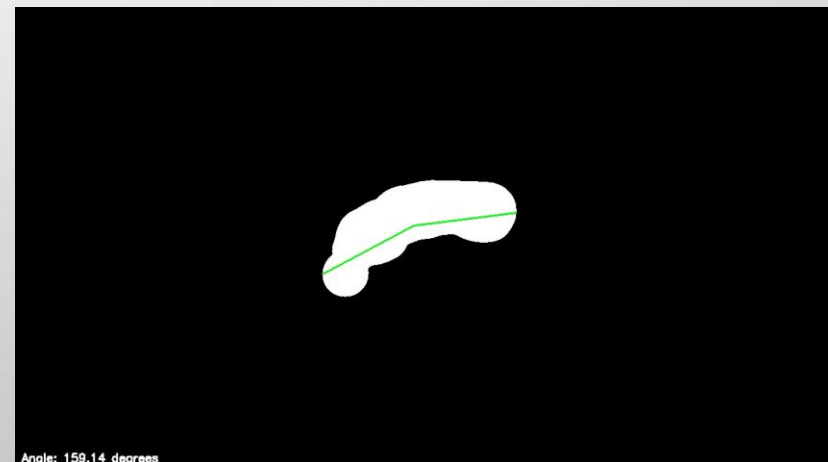
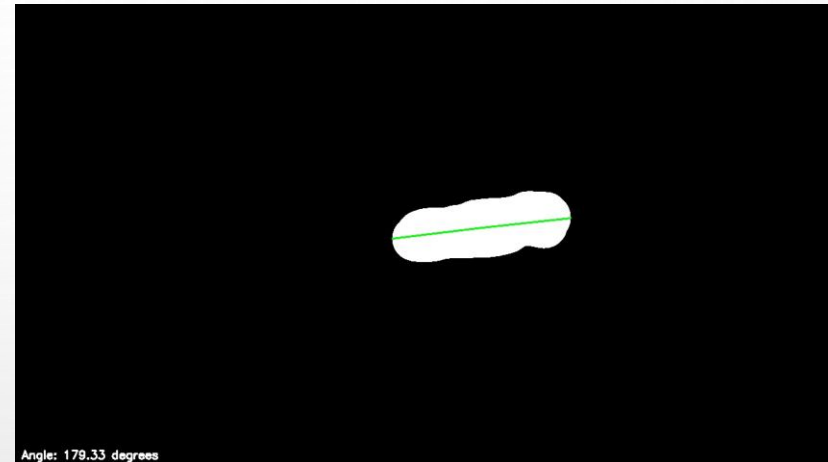
# VALIDACIÓN

---





# ITERAMOS Y MEJORAMOS



## RESULTADOS (ERR ~6%)



